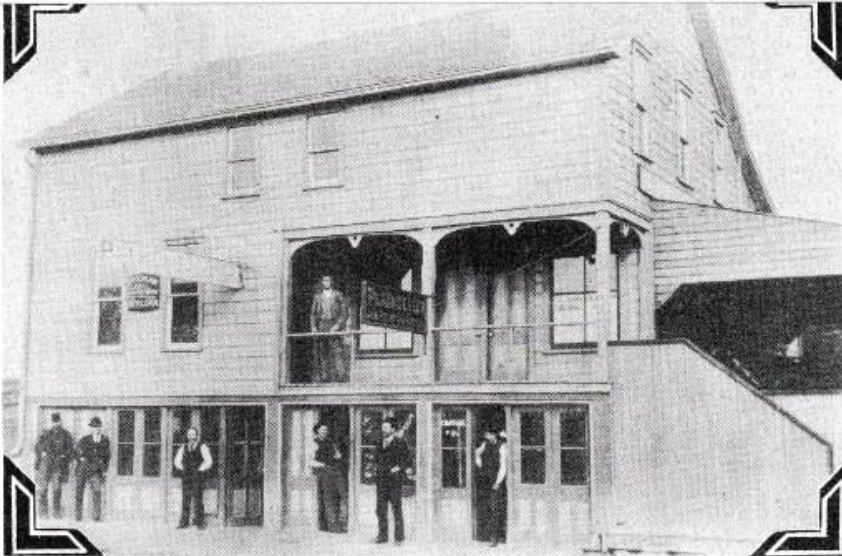
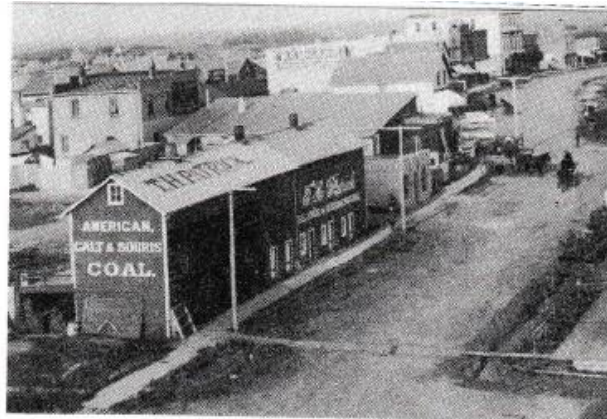


T. H. PATRICK LUMBER

The T. H. Patrick Lumber Company began in 1883. Originally located near Crescent Avenue and First Street. The lumber was hauled from Brandon to Souris by a team and wagon. It was a two-day round trip. Later the business moved to where the Crescent Manor is today.



T.H. Patrick's Lumber Office

The first Plaindealer Office was located here

This building is located in the area where Glenwood & Souris Regional Library now stands